



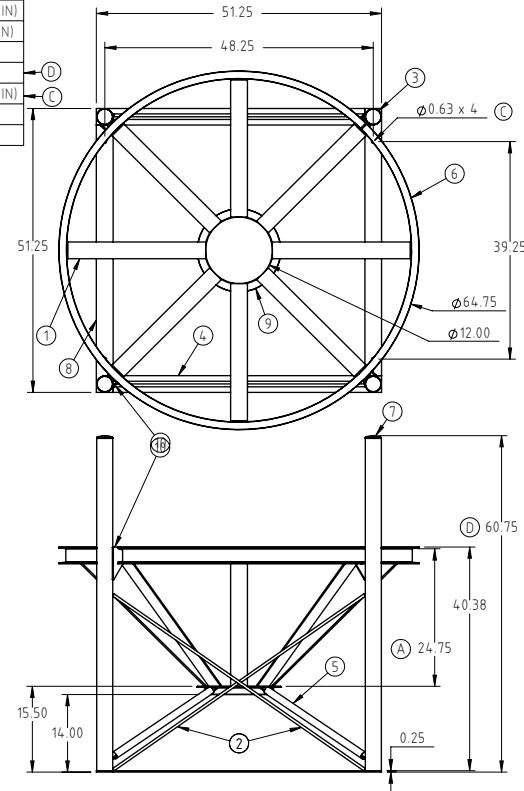
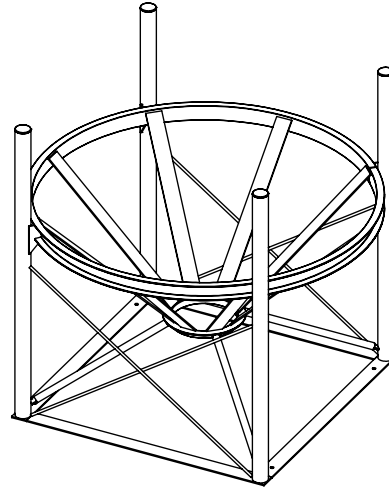
© DEN HARTOG INDUSTRIES, INC.

Copyright: All information furnished within this document, electronic file or design correspondence is the property of Den Hartog Industries, Inc. and shall not be used, disclosed to others or copied without the expressed written consent of Den Hartog Industries, Inc.

KEY	PART NUMBER	MATERIAL	DESCRIPTION	QTY.
1	CB064-45ST-1	B02500X30000	1/4 X 3 FLAT BAR	8 @ 34.875 IN (279 IN)
2	CB064-45ST-2	R05000	1/2" MILD STEEL ROD	4 @ 55 IN (220 IN)
3	CB064-45ST-3	P25000	2 1/2" SIZE TUBING	4 @ 60 IN (240 IN)
4	CB064-45ST-4	B02500X30000	1/4 X 3 FLAT BAR	2 @ 48.25 IN (96.5 IN)
5	CB064-45ST-5	T1000X01090	1" OD ROUND MILD X .109	4 @ 29.25 IN (117 IN)
6	CB064-45ST-6	C03X41	3" MILD STEEL CHANNEL	218 IN
3	12688	62202	2-1/2" PIPE PLUG	4
8	CB064-45ST-8	B02500X30000	1/4 X 3 FLAT BAR	2 @ 48.25 IN (96.5 IN)
9	RAR-12	RAR-12	ROLLED ANGLE, 12" PLAIN	1
10	SJ10306	S-2500	CB STAND BRACKET	4

CB064-45ST

D



D	12688 WAS CB064-45ST-7, 60.75 WAS 60.25	ADH 6/18/09	1888
---	---	-------------	------

C	HOLES ADDED	ADH 1/16/08	1566
---	-------------	-------------	------

B	TOLERANCE WAS 1% AT 68° F	GWC 3/8/07	
---	---------------------------	------------	--

A	ADDED B.O.M. CHANGED 4.0 TO 4.0.38	NVE 5/16/06	
---	------------------------------------	-------------	--

REV	DESCRIPTION	BY / DATE	CCN
-----	-------------	-----------	-----

ALL DIMENSIONS ARE IN DECIMAL INCHES TOLERANCES UNLESS OTHERWISE SPECIFIED		THIRD ANGLE PROJECTION ANSI 14.5M	SHOT WEIGHT:
POLYETHYLENE ±1% @ 68° F	METAL DECIMAL ± .125" FRACTION ± 1/4" ANGLE ± 1°		SHIPPING WEIGHT:
			FINISH:

DRAWN / DATE	MATERIAL
ADH 6/18/07	

APPRD. / DATE	NOTES:
REH 7/18/07	

FINISH:	
---------	--



Den Hartog
INDUSTRIES, INC.

Ace Roto-Mold Injection Molding Blow Molding Sowjoy
4010 HOSPERS DRIVE S. BOX 425, HOSPERS, IOWA 51238-0421

DESCRIPTION	CB, 1000 OR 1490 GAL-45 DEG, STAND
SCALE	N.S.
PART NO.	CB064-45ST