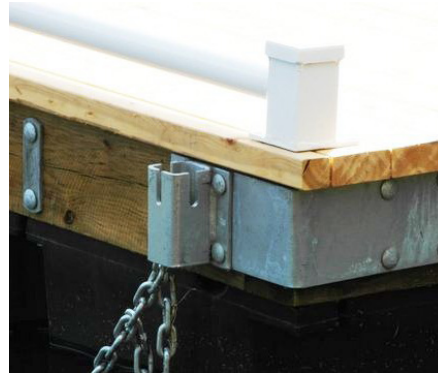


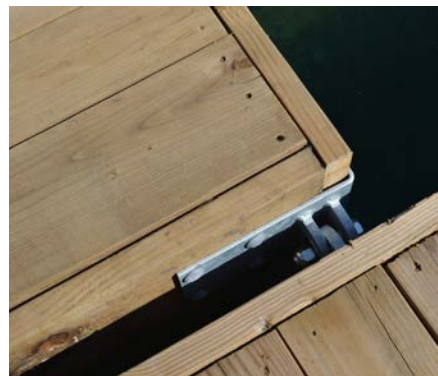


• Dock Hardware •



Our standard hot-dipped, galvanized steel dock hardware is manufactured from 1/4" thick steel while our heavy duty hardware is manufactured from 3/8" thick steel.

Using the right materials the first time will ensure you have a dock that will be able to ride out those high winds and choppy waters. All dock hardware is made from 0.5" diameter carriage bolts and can be used with 2"-4" thick lumber. Need some help knowing where everything goes? Kits and plans are available--and our experienced staff can help you answer any questions.



Corner Brackets

All galvanized dock hardware is available in standard or heavy duty models unless otherwise noted. Heavy duty part numbers are identified with an "-HD" at the end.



Part #	Description
H-OCM / H-OCM-HD	Outside Corner Male Bracket
H-OCMM / H-OCMM-HD	Outside Corner Male-Male Bracket
H-OCF / H-OCF-HD	Outside Corner Female Bracket
H-OCFF / H-OCFF-HD	Outside Corner Female-Female Bracket
H-OCMF / H-OCMF-HD	Outside Corner Male-Female Bracket

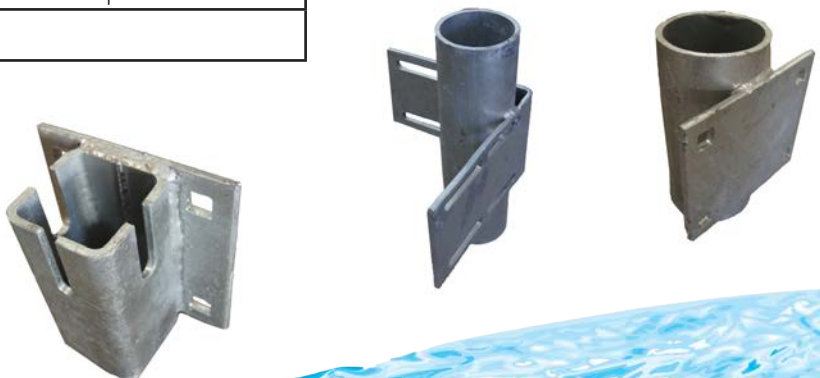


Part #	Description
H-IC / H-IC-HD	Inside Corner Bracket
H-OCE / H-OCE-HD	Outside Corner Bracket

Part #	Description
H-CRS*	Chain Retainer
H-ICP3*	Inside Corner- 3" I.D Pipe Holder
P-3*	3" Pipe Holder

*Standard only

Holdings/Retainers



Angle Brackets



H-A / H-A-HD



H-CA / H-CA-HD

Part #	Description
H-A / H-A-HD	Angle Bracket
H-CA / H-CA-HD	Cleat Angle Bracket

H-SF / H-SF-HD



H-SM / H-SM-HD



Single T Brackets

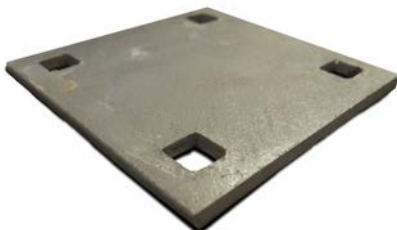
Part #	Description
H-SM / H-SM-HD	Single "T" Male
H-SF / H-SF-HD	Single "T" Female



Plates

Part #	Description
H-W / H-W-HD	Washer Plate
H-B / H-B-HD	Backup Plate
H-SP *	Splice Plate

*Standard only



H-B / H-B-HD



H-W / H-W-HD



H-SP

Fasteners

Contact BARR
Plastics Today!

barrplastics.com | 1.800.665.4499



Part #	Description	Size (in)
B852-500	Carriage Bolt - Hot-Dipped Galvanized	3/8 x 3
B852-509	Carriage Bolt - Hot-Dipped Galvanized	3/8 x 6
B852-513	Carriage Bolt - Hot-Dipped Galvanized	3/8 x 8
B852-588	Carriage Bolt - Hot-Dipped Galvanized	1/2 x 2 1/2
B852-590	Carriage Bolt - Hot-Dipped Galvanized	1/2 x 3
B852-594	Carriage Bolt - Hot-Dipped Galvanized	1/2 x 4
B852-595	Carriage Bolt - Hot-Dipped Galvanized	1/2 x 4 1/2
B852-596	Carriage Bolt - Hot-Dipped Galvanized	1/2 x 5
B852-597	Carriage Bolt - Hot-Dipped Galvanized	1/2 x 5 1/2
B852-599	Carriage Bolt - Hot-Dipped Galvanized	1/2 x 6
B852-602	Carriage Bolt - Hot-Dipped Galvanized	1/2 x 8
B852-605	Carriage Bolt - Hot-Dipped Galvanized	1/2 x 9
B852-607	Carriage Bolt - Hot-Dipped Galvanized	1/2 x 10
B852-610	Carriage Bolt - Hot-Dipped Galvanized	1/2 x 12
B856-418	Flat Washer - Hot-Dipped Galvanized	3/8
B856-422	Flat Washer - Hot-Dipped Galvanized	1/2
B856-423	Flat Washer - Hot-Dipped Galvanized	9/16
B856-518	Lock Washer - Hot-Dipped Galvanized	3/8
B856-522	Lock Washer - Hot-Dipped Galvanized	1/2
B856-018	Hex Nut - Hot-Dipped Galvanized	3/8
B856-022	Hex Nut - Hot-Dipped Galvanized	1/2
B854-504	Hex Head Lag Bolt - Galvanized	3/8 x 4
B854-509	Hex Head Lag Bolt - Galvanized	3/8 x 6
B854-599	Hex Head Lag Bolt - Galvanized	1/2 x 6
B854-603	Hex Head Lag Bolt - Galvanized	1/2 x 8
B854-607	Hex Head Lag Bolt - Galvanized	1/2 x 10
B854-610	Hex Head Lag Bolt - Galvanized	1/2 x 12
5164-193	SS Tapping Screw Truss Socket #2 Robertson Round Head	#10 x 1
5164-197	SS Tapping Screw Truss Socket #2 Robertson Round Head	#10 x 1 1/2
5164-200	SS Tapping Screw Truss Socket #2 Robertson Round Head	#10 x 2
F-3435B	Connector Pin w/Click Pin	3/4 x 3 1/2

